



FIELD NOTES

Welcome to Field Notes, the USofAZ monthly eNewsletter. The purpose of this publication is to inform you about news surrounding surveying and other like disciplines, spur lively conversation and provide opportunities for continuing education. It is intended to be brief, informative, and easy to navigate. As is with everything we do at USofAZ, it's about YOU! Your feedback about Field Notes is always welcome.

[Visit our Website](#)

National Surveyors Week
March 20 - 26 2016

[Sign Up for NSW activities HERE!](#)

1st Annual National Surveyors Week Celebration!

USofAZ has a full week of activities scheduled for your benefit and enjoyment. We welcome you to be a part of this fun and educational week recognizing our great profession!

Please sign up for any or all events by clicking on the link above.

Monday: Photo competition - FREE!
Winner receives \$50 gift card, 2nd place \$25 gift card

Tuesday: Land Surveyor Apprenticeship Program Presentation
ADOT/AZCORS Presentation
Fee: \$30.00*
Location: Bowman Consulting

Wednesday: Happy Hour at Pedal Haus Brewery

Cash Bar with Happy Hour Prices

Thursday: Contracts & Legal Matters Seminar
Fee: \$30.00*
Location: Bowman Consulting

Friday: Surveyor's Roundtable Breakfast - FREE!
Location: Bowman Consulting

****USofAZ Members may use their 50% Vouchers for Seminars***



Aerial Photogrammetric Mapping Specialist

"Our goal is to supply superior quality mapping products in a timely manner, while building strong working partnerships."

atmlv.com

SURVEY NEWS

POB Guest Column: One Size Does Not Fit All

(Harold Baldwin, PLS)

Our world is becoming increasingly dependent on technology, particularly the GPS component of the tools we use. I am just as dependent on GPS tools as the rest of you, so I would like to share my observation regarding this movement to licensure for those disciplines that "measure." The past year, POB had many articles regarding the world of measurement — in mapping, GIS, data collecting, etc. The postulation seems to be that since we all are using the same tools for our work, all of us should then be eligible for the sanction of license as surveyors. This is against the heart of that sacred trust of license as "Surveyor." I respectfully would voice my opposition to open licensure.

[READ MORE](#)



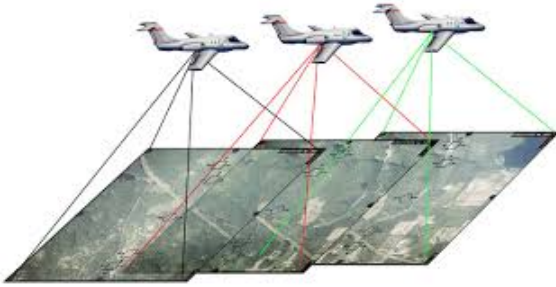
Surveyors Source is the Southwest's premier distributor of data collectors, total stations, GNSS and surveying accessories. We offer an extensive line of equipment from Leica Geosystems, Aitut Positioning Systems, Carlson Software, MicroSurvey and many more

www.SurveyorsSource.com

AERIAL MAPPING NEWS

Surveying is a time and labor intensive process that requires extremely high levels of accuracy. Two North American surveyors are addressing this challenge by using photogrammetry to increase the number of points surveyed by

Photogrammetry Helps Surveyors Save Time and Improve Accuracy



several orders of magnitude while reducing field time by half or more. Photogrammetry is the process of generating measurements and models from photographs. "Photogrammetry helps us win more jobs by providing more competitive pricing," said Paul Lepine, Senior Geotechnical Technician for exp Services Inc., Burnaby, British Columbia. "Photogrammetry provides much more accurate measurements since every point is created in 3 or 4 photos and these photos are reconciled together to obtain closure for the entire model," said Eric Blackburn, President of EBI Surveying, Tampa, Florida.

[READ MORE](#)

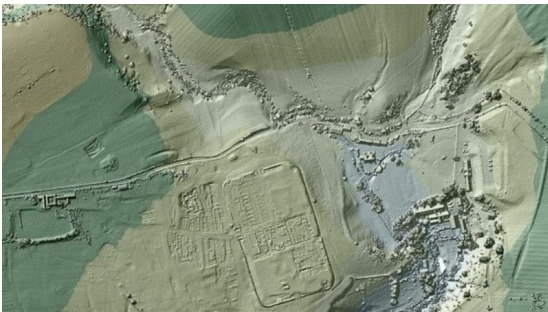


Ambit Consulting survey professionals provide technical expertise to assist in the successful completion of projects ranging from extensive control networks to detailed Topographic Surveys.

AmbitConsulting.us

SCANNING NEWS

'Lost' roads of ancient Rome discovered with 3D laser scanners



Laser scans of Britain's terrain may reveal weathered Roman roads that have been hidden for centuries across the countryside of northern England.

Over the past 18 years, the U.K.'s Environment Agency has used a technology called lidar to collect data for more than 72 percent of England's surface. This remote sensing technique bounces laser light beams off the ground to make 3D terrain maps that can peer below vegetation and reveal the contours of every ditch and boulder below.

[READ MORE](#)



Cooper Aerial Surveys Co.

Celebrating 50 years

Embracing Modern Mapping Methodologies

CooperAerial.com